

4B Sweet Sue and the bank robbers

1 *  1.15 Match the expressions to the pictures. Listen and check.

1 i

Go round the roundabout.

2

It's opposite the station.

3

It's on the corner.

4

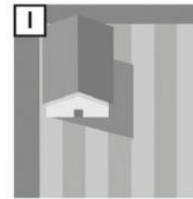
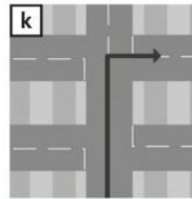
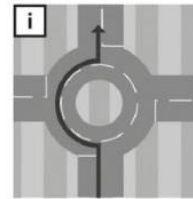
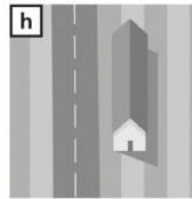
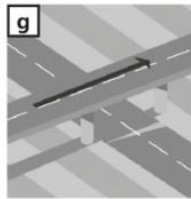
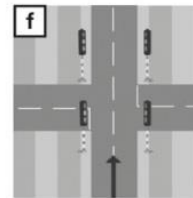
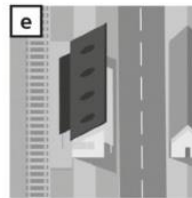
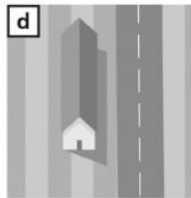
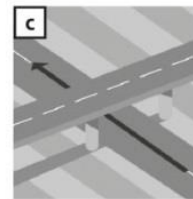
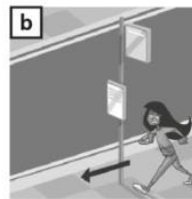
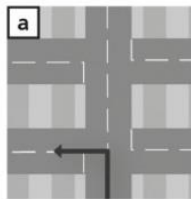
Go past the bus stop.

5

Go along this street till you come to some traffic lights.

6

Take the first turning on the left.



7

Take the second turning on the right.

8

It's on the left.

9

It's on the right.

10

Go over the bridge.

11

Go under the bridge.

12

It's on the other side of the river.

the, a / an

2 a ** Look at the map in exercise 3. Complete the dialogues with a / an or the.

b Draw the routes on the map. 

1 The people are at the station.

- Excuse me. How do I get to ¹ the museum, please?
- Go down here till you come to ² roundabout. Turn left at ³ roundabout, then take ⁴ second turning on ⁵ right. That's Treeview Street. There's ⁶ sports shop on ⁷ corner. Go down there and you'll see ⁸ museum on ⁹ left.
- Thank you.

2 The people are at the traffic lights.

- Excuse me. Is there ¹ café near here, please?
- ² nearest café is near ³ bus station. Go straight down here until you see ⁴ railway bridge. ⁵ café is just in front of ⁶ bridge. It's next to ⁷ newsagent's.
- Thank you.

cvičení 3

